



# RENTROULETTE

509 ATLANTIC AVE, BROOKLYN, NY

Roulette is a non-profit performance venue founded in 1978, committed to presenting new and adventurous art in all disciplines.

Conveniently located a block from the Barclays Center in Downtown Brooklyn, Roulette's gorgeous event space features a modular stage, flexible seating for up to 400, a kitchen, and state-of-the-art sound and lighting systems.

All rentals also include access to Roulette's expert technical and event staff to ensure that your event runs smoothly and successfully!

*Photo by Roulette*





Photo by Roulette

# ABOUT THE SPACE

## STAFF

Pre-event coordination assistance is provided by the Special Events team in the weeks leading up to your event and on the day-of an Event Liaison and A/V Engineer are staffed to ensure a smooth program.

## CATERING & VENDORS

Roulette does not have in-house catering services nor do we limit your choice of vendor, but we do highly recommend using one of our [preferred vendors](#).

## BAR

Roulette can run a cash bar or you may host an open bar (fees apply).

## ACCESSIBILITY

We are ADA compliant with a handicapped entrance and restrooms located in the ground floor lobby. The upstairs mezzanine is not wheelchair accessible.

## STAGE

Comprised of a fixed upper stage deck (28'3" x 11'10") and a modular lower stage deck (40' across with a depth of 13'1" at center and 6'2" at the wings).

In-house Wenger risers of varying sizes and heights can be used for stage extension, catwalk, etc (Use of Risers must be discussed and agreed to in advance).

SPACE	SQ.FT.	STANDING	SITTING
Ballroom (Concert)	2,500	400	240
Ballroom (Cocktail)	2,500	300	n/a
Ballroom (Banquet)	2,500	n/a	160
Mezzanine (Fixed)	2,000	n/a	153
Lobby	600	100	n/a





PROJECTOR SCREEN





BAR



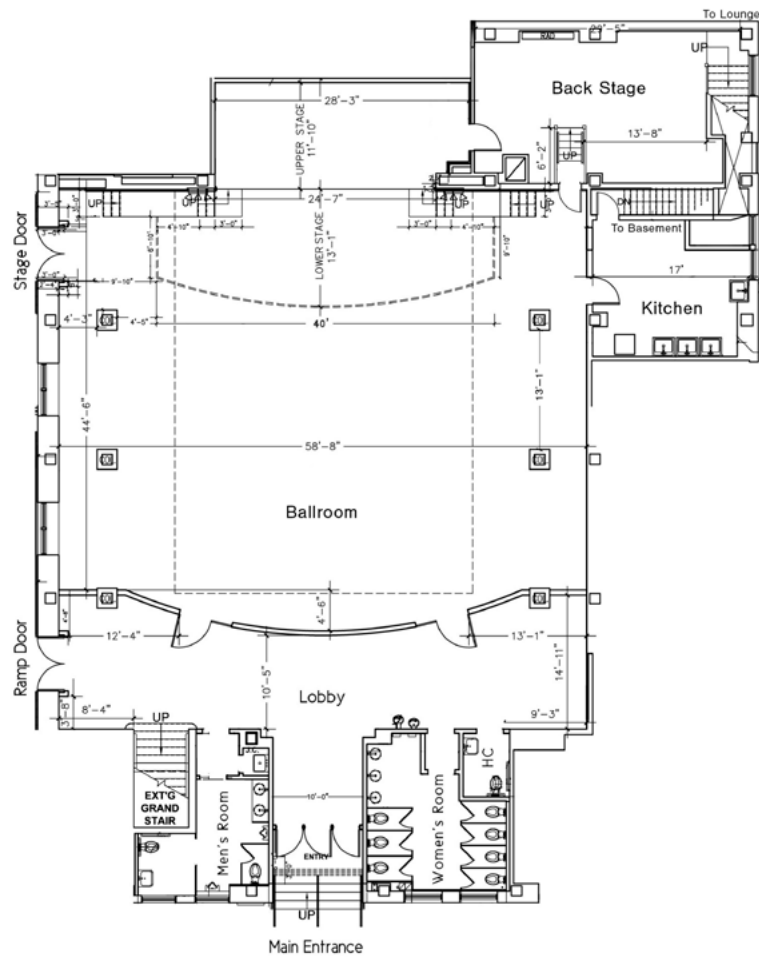
**DRESSING ROOM**



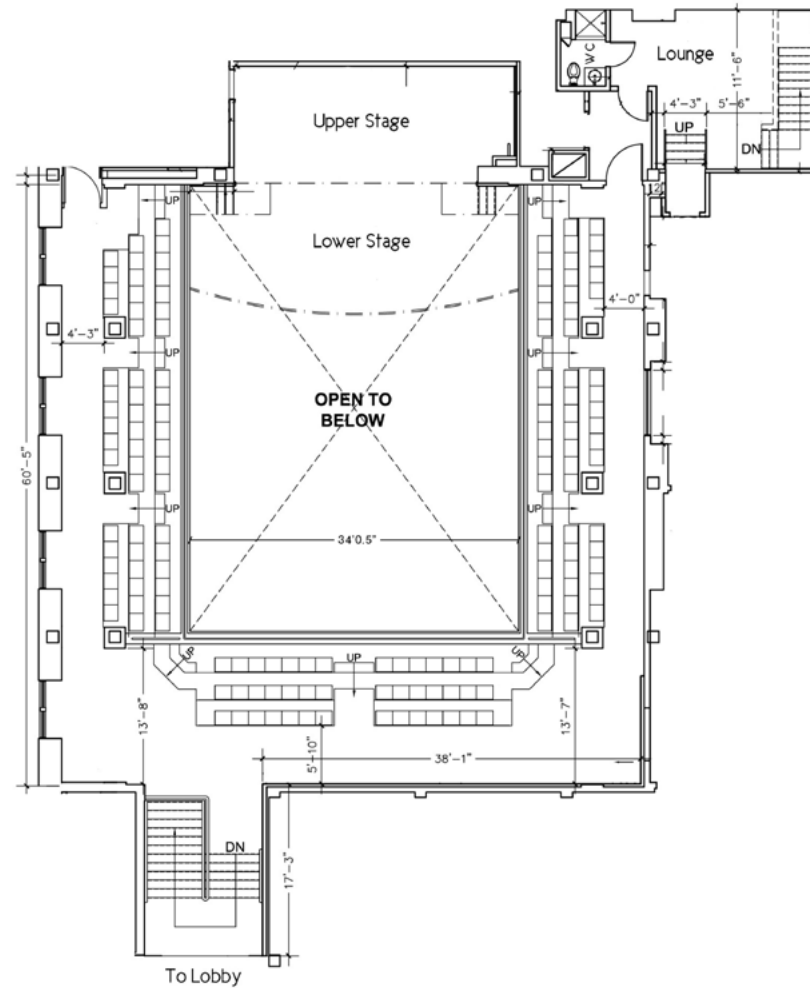


THE SOURCE 360

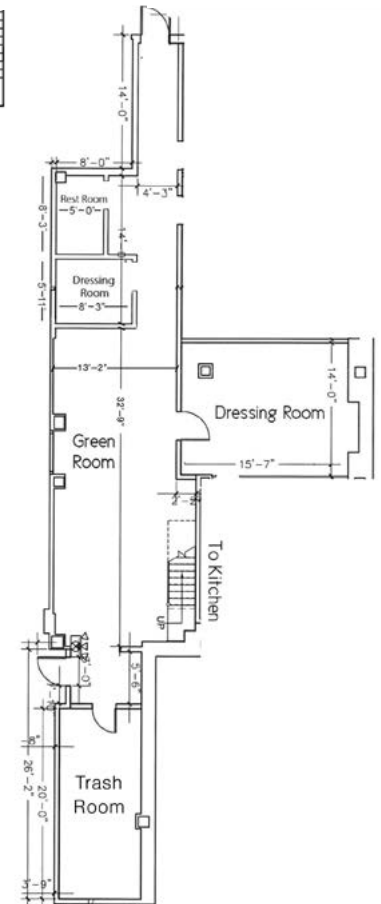
# FLOOR PLANS



## BALLROOM - FLOOR 1



## BALCONY - FLOOR 2



## BASEMENT



# TECH

**PA SYSTEM** comprised of Myer UPJ-1P loudspeakers, surround & balcony-fills, stage monitors, and Myer 500 HP subwoofers

**YAMAHA CL5 DIGITAL CONSOLE** with 64 channels over Dante with a full library of onboard effects, wired for multi-track digital recording.

**MICROPHONES** Large collection of studio-quality dynamic, condenser, ribbon microphones as well as wireless handheld, lapel, and headset microphones.

**PROJECTORS** Ceiling mounted Panasonic PT-RZ12KU (1920 x 1200 resolution, 1200 Lumens) and 2 additional floating NEC 4100W projectors; 11' x 20' wall-mounted screen (concealable) and 13.5' x 21.5' roll down screen (retractable).

**LIGHTING** ETC Ion XE 12K Lighting System system with 134-instrument lighting grid including SolaFrame Studios, Martin MAC Aura xBs, ColorSource Deep Blue Pars, ColorSource Spot Vs, ETC Selador Lustr 11s, incandescent Source Four Lekos and Pars, as well as a 20" mirror ball & ADJ pinspots.

**INTERNET** Facility-wide coverage with multiple high bandwidth networks for 500+ concurrent clients, as well as prioritized Quality of Service for critical applications such as live streaming.

**VIDEO RECORDING & LIVE STREAM** services available using 6 Sony BRC H900 PTZ robotic cameras and staffed by a Camera Operator and additional Audio Engineer.

*Photo by Ryan Muir*







# BACKLINE

Modern Drum Shop Custom Jazz Kit  
Steinway Model D 9' Grand piano  
28 Manhasset Music stands  
(2) Roland KC-550 Keyboard Amp

## BASS AMPS

(1) Fender Bassman 50 with 2'x15" cabinet  
(1) Eden WT800 with Eden D115XLT cabinet

## GUITAR AMPS

(2) Fender Twin Reverb  
(1) Fender Blues Deluxe Reissue  
(1) Fender '65 Deluxe Reverb  
(1) Fender Acoustasonic 90  
(1) Fender Acoustasonic 150  
(1) Roland JC-120  
(1) Fender Concert

*Photo by Corey Torpie*



# GUIDELINES

## BOOKING & CANCELLATION

We require a signed Space Rental Contract, a 50% non-refundable deposit, and a refundable security deposit to secure the date for your event. The remaining balance is due one month prior to the event. If your event is canceled within 30 days of the scheduled date, the full space rental cost is forfeited.

## MARKETING & PROMO

Roulette does not offer any Marketing or PR support and does not include rental events in the online artistic programming calendar.

## MAINTENANCE

The renter is responsible for restoring the theater to its original state, including removing all decorations and rental items and leaving the venue “broom clean.” Trash must be brought to the garbage room in Roulette’s basement.

If you have hired a caterer for your event, the caterer must leave the kitchen and any other prep spaces clean.

## CURFEW

We respect our neighbors by concluding all amplified music by 12am Monday-Saturday and 11pm on Sundays.



*Photo by Roulette*





eliminating racism  
empowering women  
**ywca**  
brooklyn







# VISIT ROULETTE

## ADDRESS

☆509 Atlantic Ave  
Brooklyn, NY 11217  
(Corner of Atlantic Ave and Third Ave)

## SUBWAY

- ① Atlantic Avenue - Barclay's Center  
2, 3, 4, 5, D, N, R, B & Q and LIRR  
4 min walk
- ② Fulton Street G  
5 min walk
- ③ Hoyt-Schermerhorn A, C, G  
8 min walk

## CAR

Roulette can be easily accessed via the Brooklyn and Manhattan Bridges, as well as the Brooklyn-Queens Expressway to the intersection of Flatbush Avenue and Atlantic Avenue.

# CONTACT

events@roulette.org  
(917) 267-0370  
[www.roulette.org/rentroulette](http://www.roulette.org/rentroulette)

